

Operator performance as a function of alarm rate and interface design

David Strobhar, PE - Beville Engineering

Glenn Uhack - Louisiana State University

Craig Harvey, Ph.D., PE –Louisiana State University



**CENTER FOR
OPERATOR
PERFORMANCE**

An Industry/University
Center for Excellence



Center for Operator Performance

BEVILLE
ENGINEERING, INC.

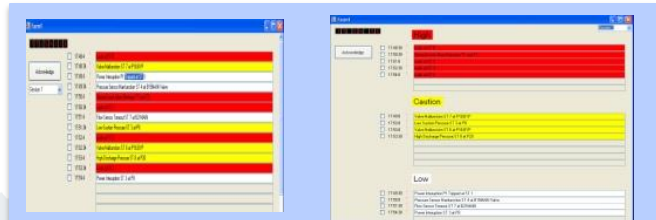
An Industry-Academia Collaboration



Performance Shaping Factors



Experiment Overview



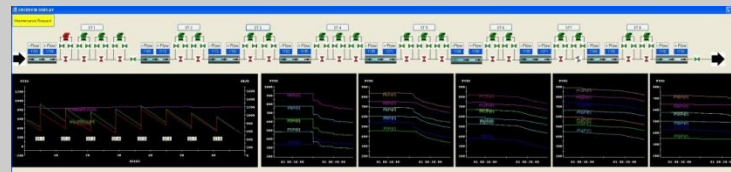
Alarm Displays

- Categorical
- Chronological

Alarm Rates

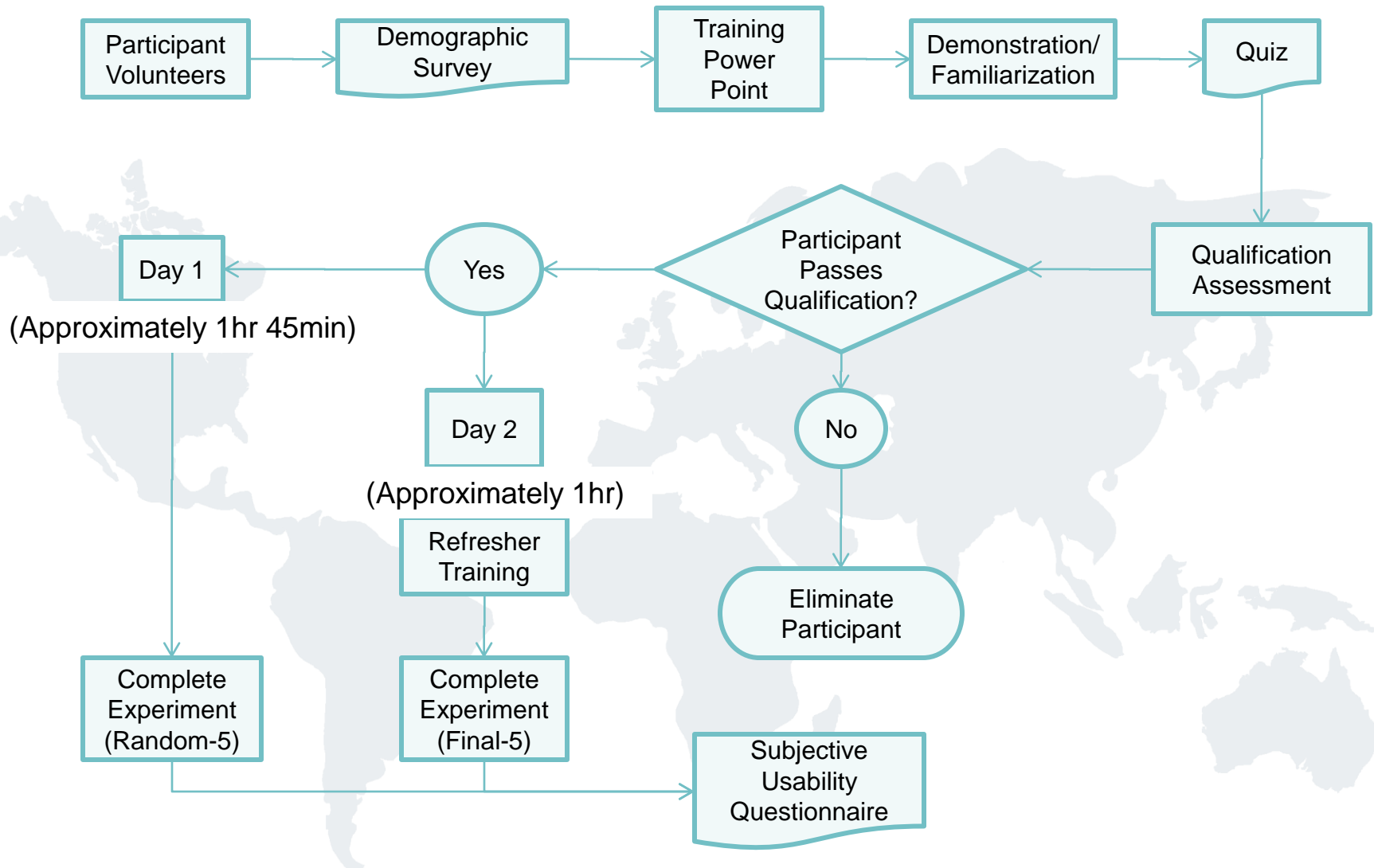
- 1 per 10 min
- 2 per 10 min
- 5 per 10 min
- 10 per 10 min
- 20 per 10 min

20 in First 10 Minutes	Chronological and Categorized Alarm display
10 in First 10 Minutes	Chronological and Categorized Alarm display
5 in First 10 Minutes	Chronological and Categorized Alarm display
2 in First 10 Minutes	Chronological and Categorized Alarm display
1 in First 10 Minutes	Chronological and Categorized Alarm display

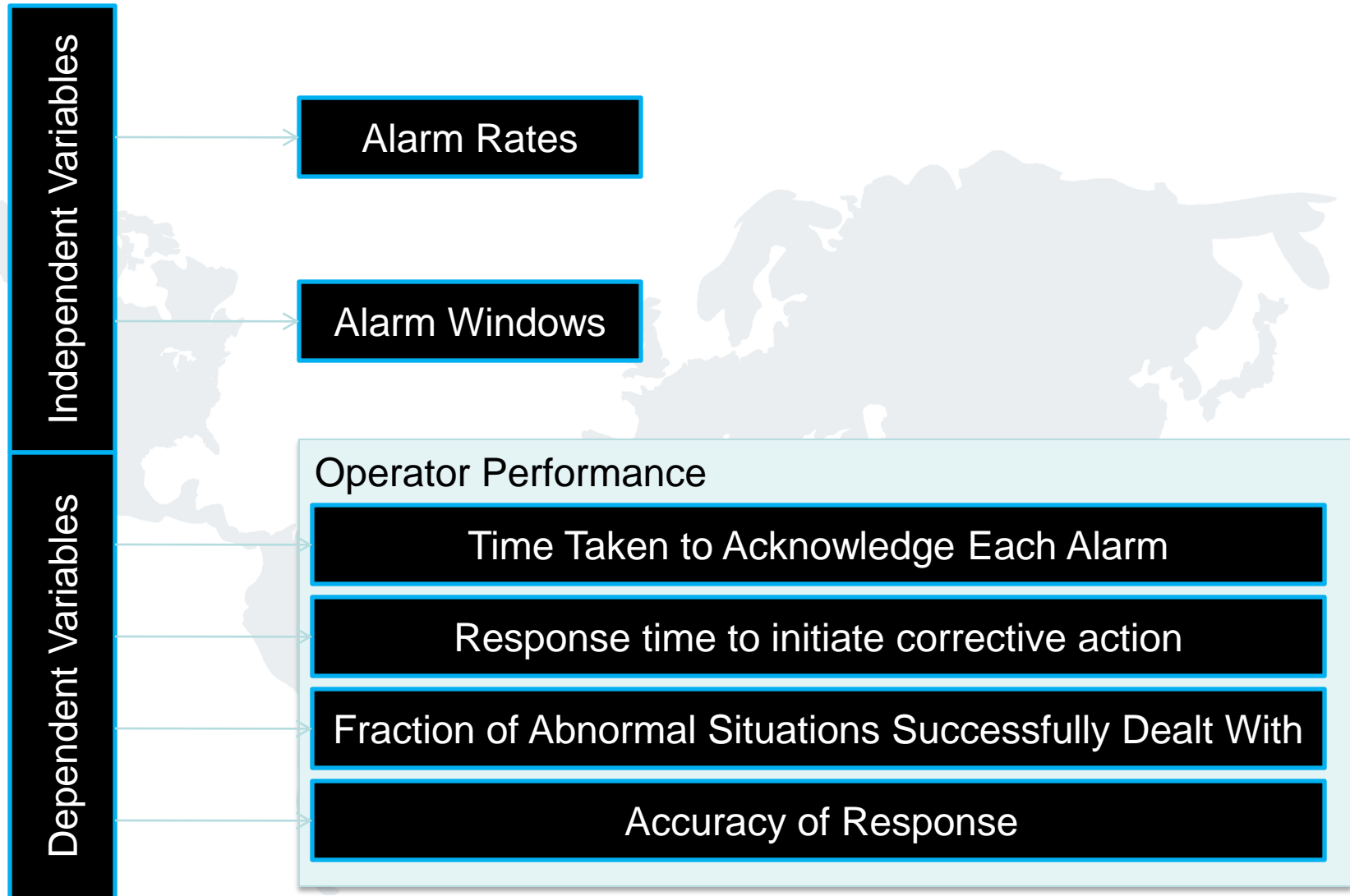


Operator Performance

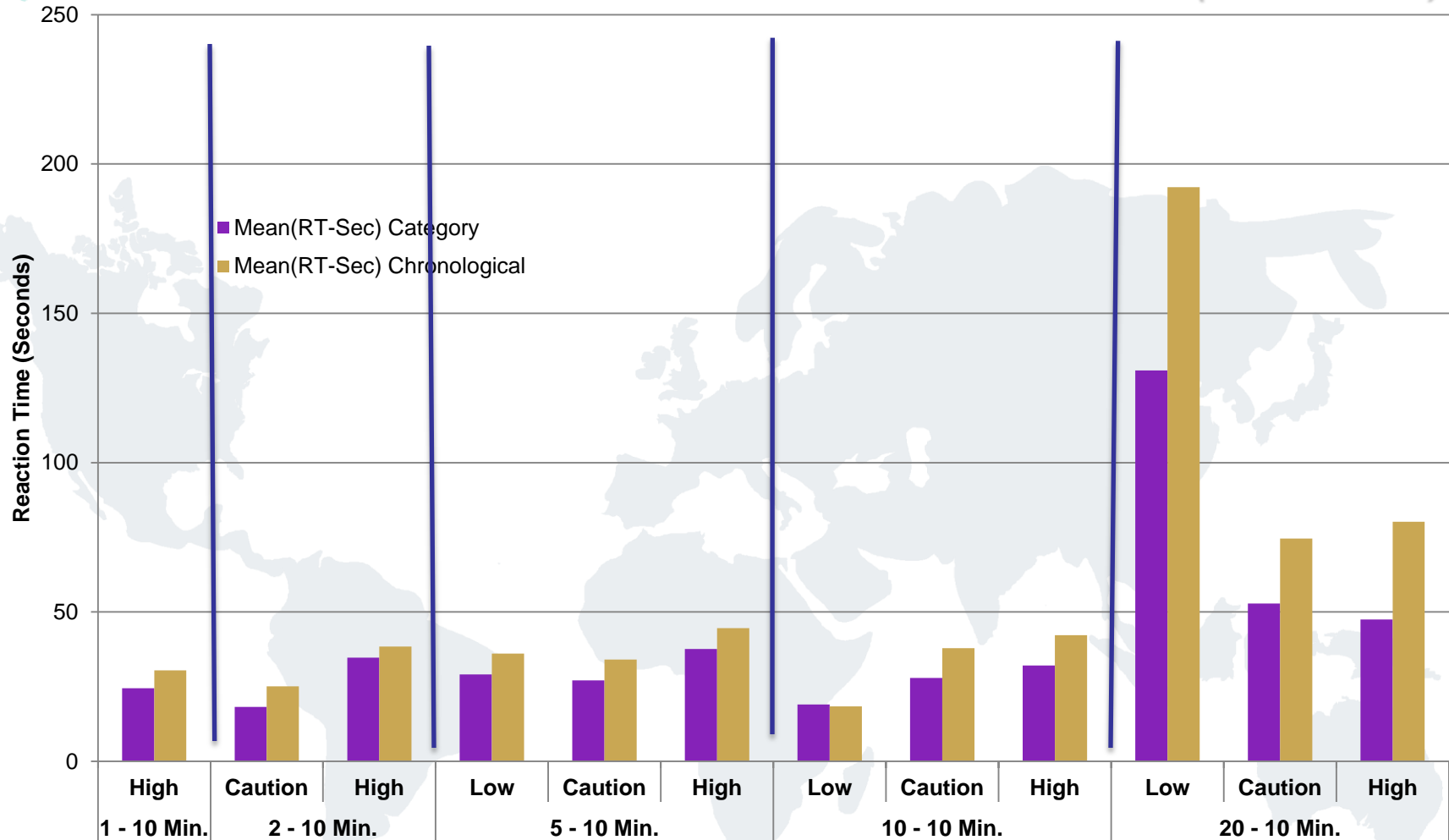
Experimental Flow Chart



Experimental Measures



Descriptive Statistics - Mean Reaction Time (Seconds)



Reaction Time (*All Alarms*)

Analysis of Variance

Source	DF	Sum of Squares	Mean Square	F Ratio	Prob > F
Model	9	2590480	287831	25.8014	
Error	2311	25780633	11156		
C. Total	2320	28371113			<.0001

Effect Tests

Source	Nparm	D F	Sum of Squares	F Ratio	Prob > F
Alarm Rate	4	4	2137765.9	47.9078	<.0001
Cat.(2)/Chron(1)	1	1	34194.5	3.0652	0.0801
Alarm Rate*Cat.(2)/Chron(1)	4	4	137439.4	3.0800	0.0153

Reaction Time (*All Alarms*)

Level

2010,1 A

2010,2 B

510,1 C

1010,1 C

210,1 C

510,2 C

110,1 C

1010,2 C

210,2 C

110,2 C

Least Sq Mean

111.83361

73.85974

38.67097

35.64821

31.77419

31.71333

30.41935

27.85161

26.46774

24.48387

- 20 alarms in 10 minutes using a chronological display is statistically different than 20 alarms in 10 minutes using a categorical display.
- 20 alarms in 10 minutes for either display is statistically different than any other alarm rate using either display.
- 20 alarms in 10 minutes doubles or triples their response time.

***Levels not connected by same letter are significantly different

Note

1-Chronological
2-Categorical

- **Current alarm metrics may be too conservative**
- **Presentation method has a significant impact**
- **Operator performance impact can be measured**
- **However –**
 - Students?
 - 10 minutes?

Alarm Rate II – In Process

Repeat initial experiment

- With refinery operators and pipeline controllers

Alarms per 10 minutes	Treatment Condition	
	Chronological	Categorical
10	10 min	10 min
20	10 min	10 min

Longer time duration

- Expose to alarms for 60 minutes
- Refinery operators and pipeline controllers

Alarms per 10 minutes	Treatment Condition	
	Chronological	Categorical
15	1 hour	
20	1 hour	1 hour
25	1 hour	1 hour
30		1 hour



Questions?